



STRING ALONG

Pick macramé pieces like this Ian Snow macramé drum lampshade for a handcrafted look. £75, trouva.com



TRAY CHIC

The Gladom tray table in powder-coated steel has a handy removable tray for serving. £15, ikea.com



ROUND & ROUND

Cover floors with this Sarina handwoven brown natural jute rug for instant artisan cool. £60.99, wayfair.co.uk

to recreate from high street furniture and homeware stores. It's a look that is currently trending. The gorgeous wicker chair can be purchased from Ikea for around £70 while the charming mango and macramé room divider can be found for £360. These types of screens not only look pretty but are also great for sectioning off part of your room without losing too much light. The floor mat is a lovely addition, especially if you have hardwood or stone flooring. Check out H&M Home as they carry a wide range of accessories you will need to recreate this style at a great price.

■ designsdirect.co.uk

LAYER UP

Piles of pale pink and soft yellow cushions add warmth and texture to the boho boudoir. From £3.99, hm.com



'THIS charming, boho bedroom is definitely one of my favourites,' says Cindy Fuller, founder of Designs Direct, a bespoke, online interior design service catering for every budget. 'Although the look is bang on trend at the moment, with its soft, relaxed vibe, the neutral colours give it a timeless appeal. Then there's the tiny pop of soft mustard and pink in the cushions which give it a slightly edgy feel. The one thing that really stands out is the exquisite wardrobe. This type can be found on the internet for around £500-600 and will be a great investment piece.'

'The room feels inviting with its effortless elegance and actually it wouldn't be too difficult

THE DARK SIDE

'WE LOVE this strong, confident look,' say interior duo Caroline Nicholls and Deborah Moor of slightlyquirky.com. 'It's striking, yet relaxing, with the layering of rich colour and mix of textures creating a sumptuous feel. We are seeing more dark colours in bedrooms and love giving our clients the confidence to not always go for the safe, predictable option. This works because of the well-defined palette which sticks to just a few colours, with touches of pattern and flashes of bronze and brass to add decadence. The strong contrast between the dark walls and the yellow with the crisp white ceiling and textural bedding, lifts the look to create an unforgettable statement boudoir. A great way to recreate this would be with your paint and by opting for a strong colour, such as Farrow & Ball's Hague Blue (£45 per 2.5l, farrow-ball.com). A simpler shaped headboard covered in a bright velvet could be a cheaper alternative. Cushions are a simple and effective way to inject the essence of this theme, animal print is on trend but is easily changed. We love Graham & Green. To get these great bedside tables at a fraction of the cost, keep a look out at antique fairs or charity shops, repaint them and add great handles. You'll find a selection at chloealberry.com, etsy.com or notonthehighstreet.com.'

■ slightlyquirky.com



PHOTO: SMOONWORTHY/PINTEREST

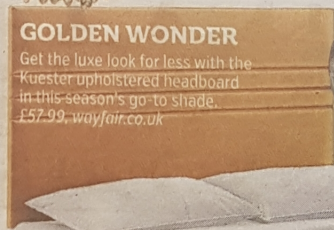
GILT-Y PLEASURE

This antique gold, resin feather wall mirror is striking against a charcoal backdrop. £46, featherandblack.com



GOLDEN WONDER

Get the luxe look for less with the Kuester upholstered headboard in this season's go-to shade. £57.99, wayfair.co.uk



PALMED OFF

Hang up this Cara palm leaf pendant ceiling light for a touch of art deco glam. £105, debenhams.com

WILD THING

Pile on the pattern with a few leopard-print faux fur cushions. £15, riverisland.com



WALL STAR

This ornate, carved resin, buffalo skull is all about making a statement. £39.95, melodymaison.co.uk

BOOK YOUR FREE DESIGN SERVICE

WITH A HOME CONSULTATION

AND

GET 15% OFF YOUR ORDER

HURRY, MUST END SOON!



Terms & conditions apply. Ask in store for details.

BATTERSEA REACH | FINCHLEY ROAD | HARRODS | NOTTING HILL | TOTTENHAM CT RD | WESTFIELD LONDON | KINGSTON | GUILDFORD | BOCONCEPT.COM

BoConcept

HOME

THE DARK SIDE

'WE LOVE this strong, confident look,' say interior duo Caroline Nicholls and Deborah Moor of slightlyquirky.com. 'It's striking, yet relaxing, with the layering of rich colour and mix of textures creating a sumptuous feel. We are seeing more dark colours in bedrooms and love giving our clients the confidence to not always go for the safe, predictable option. This works because of the well-defined palette which sticks to just a few colours, with touches of pattern and flashes of bronze and brass to add decadence. The strong contrast between the dark walls and the yellow with the crisp white ceiling and textural bedding, lifts the look to create an unforgettable statement boudoir. A great way to recreate this would be with your paint and by opting for a strong colour, such as Farrow & Ball's Hague Blue (£45 per 2.5l, farrow-ball.com). A simpler shaped headboard covered in a bright velvet could be a cheaper alternative. Cushions are a simple and effective way to inject the essence of this theme, animal print is on trend but is easily changed. We love Graham & Green. To get these great bedside tables at a fraction of the cost, keep a look out at antique fairs or charity shops, repaint them and add great handles. You'll find a selection at chloealberry.com, etsy.com or notonthehighstreet.com.'

■ slightlyquirky.com



PHOTO: SWOONWORTHY/PINTEREST



GILT-Y PLEASURE

This antique gold, resin feather wall mirror is striking against a charcoal backdrop. £46, featherandblack.com

GOLDEN WONDER

Get the luxe look for less with the Kuester upholstered headboard in this season's go-to shade. £57.99, wayfair.co.uk



PALMED OFF

Hang up this Cara palm leaf pendant ceiling light for a touch of art deco glam. £105, debenhams.com

WILD THING

Pile on the pattern with a few leopard-print faux fur cushions. £15, riverisland.com



WALL STAR

This ornate, carved resin, buffalo skull is all about making a statement. £39.95, melodymaison.co.uk